

# Swindon Open Studios



David Robinson  
Oils  
Acrylics  
Sketches



Mark Worrall  
Photography  
Ceramics  
Collage



Saturday 5 | Sunday 6 | Saturday 12 | **September 2015**  
11.00am – 5.00pm | 19 Wells St, Swindon SN1 2JJ



Light refreshments served. All welcome!



# *Make it a weekend: top places to visit in Swindon*

## **SN1 4BA** | [Swindon Museum & Art Gallery](#)



Paintings, drawings and studio ceramics from renowned modern British artists:

Ayres | Bomberg | Freud | Hambling | Hodgkin | John | Lowry and many more!

- Shop, toilets
- Close to Old Town eateries & boutiques (pictured)

Archaeology exhibitions: see an Egyptian mummy!  
Temporary exhibitions on the social history of Swindon

## **SN2 2EY** | [STEAM Museum of the Great Western Railway](#)



Exhibitions charting the history of Brunel's railway, and the development of Swindon

- Shop
- Café, toilets, wheelchair access
- Children's activities throughout the museum: drive a steam train!
- Next to Swindon Designer Outlet

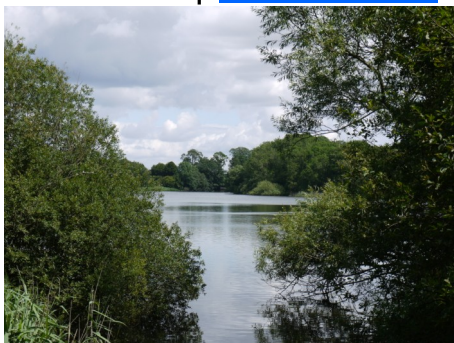
## **SN5 3PA** | [Lydiard Park](#)



Palladian country house and country park

- Original furnishings and ancestral portraits
- 18th Century walled gardens
- Tea rooms, café and toilets
- Family visitor centre
- Lake and children's play area
- Church with unique 17th Century polyptych of the St John family

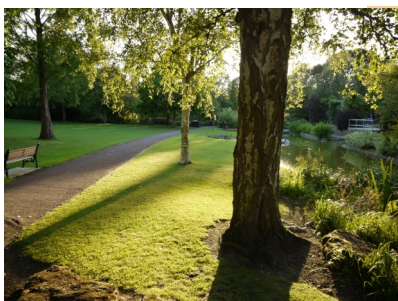
## **SN3 6AA** | [Coate Water](#)



Nature reserve, SSSI and family country park

- Reservoir lake, café and toilets
- Children's water splash park /play areas
- Pitch and putt, crazy golf, golf course
- Miniature railway
- Bird hides,
- Barbecue hire
- Wheelchair access
- Richard Jeffreys Museum (pictured)

## **SN1 3HX** | [Queen's Park](#)



- Lake and rose garden
- Café and toilets
- Community 'secret garden'
- Modern sculptures
- Weekend band concerts

## **SN3 6AA** | [Town Gardens](#)



- Formal gardens
- Rose garden
- Café and toilets
- Aviary
- Weekend band concerts