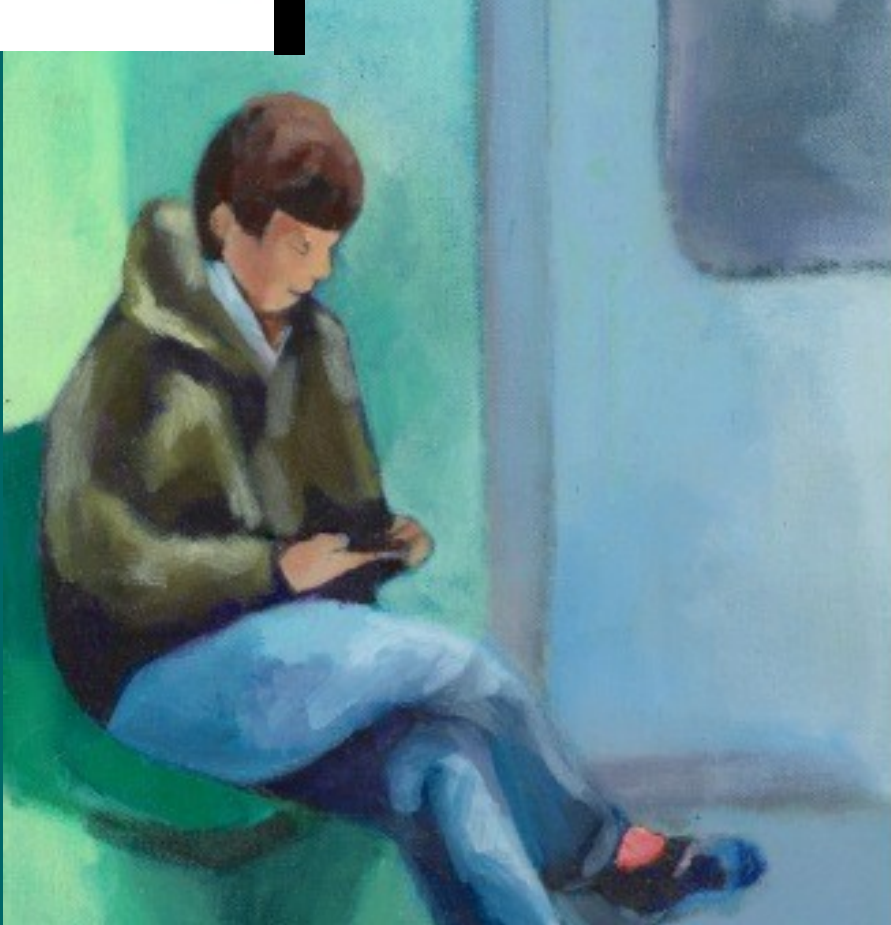


Swindon Open Studios

Swindon
OPEN
Studios

Studio open @ **Venue 23 (North & West)**
54 Omdurman St, SN2 1HA



Sat. 3rd
Sun. 4th
Sat. 10th

Sept 2016

11.00am –5.00pm

*Light
refreshments
available, all
welcome*

**OLD TOWN
ART TRAIL**

Window display @ **Francis George**
16a High St, SN1 3EP

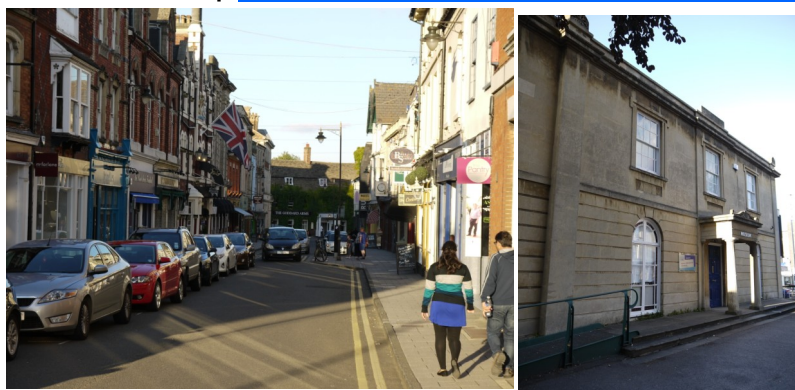
Exhibition @ **1801 Cocktails & Coffee**
96 Victoria Rd, SN1 3BD



1801 Cocktails & Coffee open:
Mon.-Fri.: from 4.00pm
Sat.: from 10.00am
Sun.: from 4.00pm

Make it a weekend: top places to visit in Swindon

SNI 4BA | [Swindon Museum & Art Gallery](#)



Current exhibition by the Keeper and Chief Curator of the Royal Academy, Eileen Cooper.

Plus, paintings, drawings and studio ceramics from renowned modern British artists.

- Shop, toilets
- Close to Old Town eateries & boutiques (pictured)

Archaeology exhibitions: see an Egyptian mummy!
Temporary exhibitions on the social history of Swindon

SN2 2EY | [STEAM Museum of the Great Western Railway](#)



Exhibitions charting the history of Brunel's railway, and the development of Swindon

- Shop
- Café, toilets, wheelchair access
- Children's activities throughout the museum: drive a steam train!
- Next to Swindon Designer Outlet

SN5 3PA | [Lydiard Park](#)



Palladian country house and country park

- Original furnishings and ancestral portraits
- 18th Century walled gardens
- Tea rooms, café and toilets
- Family visitor centre
- Lake and children's play area
- Church with unique 17th Century polyptych of the St John family

SN3 6AA | [Coate Water](#)



Nature reserve, SSSI and family country park

- Reservoir lake, café and toilets
- Children's water splash park /play areas
- Pitch and putt, crazy golf, golf course
- Miniature railway
- Bird hides,
- Barbecue hire
- Wheelchair access
- Richard Jeffreys Museum (pictured)

SN25 2DA | [Swindon & Cricklade Railway](#)



Preserved standard-gauge railway, ride on restored steam and vintage diesel engines.

- Shop
- Café housed in old Norwegian railway carriages
- Toilets, wheelchair access
- Visit the railway museum, war museum and train maintenance sheds.
- Next to Mouldon Country Park and the Tawny Owl